

(01) 00611537112380

FIRST AID	
<b>If on skin</b>	<ul style="list-style-type: none"> <li>Take off contaminated clothing.</li> <li>Rinse skin immediately with plenty of water for 15 to 20 minutes.</li> <li>Call a poison control center or doctor for treatment advice.</li> </ul>
<b>If inhaled</b>	<ul style="list-style-type: none"> <li>Move person to fresh air.</li> <li>If person is not breathing, call 911 or an ambulance, then give artificial respiration, preferably mouth-to-mouth if possible.</li> <li>Call a poison control center or doctor for further treatment advice.</li> </ul>
<b>If in eyes</b>	<ul style="list-style-type: none"> <li>Hold eye open and rinse slowly and gently with water for 15 to 20 minutes. Remove contact lenses, if present, after the first 5 minutes, then continue rinsing eye.</li> <li>Call a poison control center or doctor for treatment advice.</li> </ul>
<b>If swallowed</b>	<ul style="list-style-type: none"> <li>Call a poison control center or doctor immediately for treatment advice.</li> <li>Have person sip a glass of water if able to swallow.</li> <li>Do not induce vomiting unless told to do so by a poison control center or doctor.</li> <li>Do not give anything to an unconscious person.</li> </ul>
Have the product container or label with you when calling a poison control center or doctor or going for treatment. You may also contact 1-800-334-7577 for emergency medical treatment.	
<b>Note To Physician:</b> No specific antidote is available. Treat the patient symptomatically.	

PEEL OPEN



### Bayer Environmental Science

A Business Group of Bayer CropScience LP  
2 T. W. Alexander Drive, Research Triangle Park, NC 27709  
www.BackedByBayer.com

**BACKED**  
by **BAYER™**

NET CONTENTS  
**14.8 fl. oz. (420 grams)**

**2903524**  
3408586 040615A



## TEMPO® ULTRA WP Insecticide

For Pest Management Professionals and commercial use only. For broad-spectrum control of crawling, flying, and wood infesting insect pests for indoor and outdoor surfaces, as well as insect pests of trees, landscape ornamentals and residential and commercial lawns.

**ACTIVE INGREDIENT:**  
B-Cyfluthrin, cyano(4-fluoro-3-phenoxyphenyl) methyl 3-(2,2-dichloroethyl)-2,2-dimethylcyclo-propanecarboxylate ..... 10%  
**OTHER INGREDIENTS** ..... 90%  
100%

EPA Reg. No. 432-1304 EPA Est. No. 33967-NJ-1  
**STOP - Read the label before use.**  
Keep out of reach of children.

### CAUTION

IN CASE OF MEDICAL, ENVIRONMENTAL, OR TRANSPORTATION EMERGENCIES OR INJURIES, CALL 1-800-334-7577 (24 HOUR/DAY) For Product Information, Call Toll Free: 1-800-331-2867

### STORAGE AND DISPOSAL

<b>Do not</b> contaminate water, food, or feed by storage or disposal.	
<b>Storage:</b>	<ul style="list-style-type: none"> <li>Store in a cool, dry place and in such a manner as to prevent cross contamination with other pesticides, fertilizers, food, or feed.</li> <li>Protect from freezing.</li> <li>Store in original containers and out of the reach of children, preferably in a locked storage area.</li> <li>Handle and open container in a manner as to prevent spillage.</li> </ul>
<b>Pesticide Disposal:</b>	<ul style="list-style-type: none"> <li>Pesticide wastes are hazardous.</li> <li>Improper disposal of excess pesticide, spray mixture, or rinsate is a violation of Federal law.</li> <li>If these wastes cannot be disposed of by use according to label instructions, contact your State Pesticide or Environmental Control Agency, or the Hazardous Waste representative at the nearest EPA Regional Office for guidance.</li> </ul>
<b>Container Disposal:</b>	<ul style="list-style-type: none"> <li>Non-refillable container. Do not reuse or refill this container. Offer for recycling, if available. Offer for reconditioning, if appropriate, Triple rinse container (or equivalent) promptly after emptying. Triple rinse as follows: Empty the remaining contents into application equipment or a mix tank. Fill the container 1/4 full with water and recap. Shake for 10 seconds. Pour rinsate into application equipment or a mix tank or store rinsate for later use or disposal. Drain for 10 seconds after the flow begins to drip. Repeat this procedure two more times.</li> <li>Do not use container in connection with food, feed, or drinking water.</li> <li>Dispose of container by offering for recycling or reconditioning. Or puncture and dispose of container in a sanitary landfill, or by incineration, or, if allowed by state and local authorities by burning. If burned, stay out of smoke.</li> </ul>
<b>Spills:</b>	<p>If the container is leaking or material is spilled for any reason or cause, carefully sweep material into a pile. Refer to Precautionary Statements on label for hazards associated with the handling of this material.</p> <ul style="list-style-type: none"> <li>Do not walk through spilled material.</li> <li>Dispose of as directed for pesticides above.</li> <li>Keep unauthorized people away.</li> <li>You may contact the Bayer Emergency Response Team for decontamination procedures or any other assistance at 1-800-334-7577.</li> </ul>

### PRECAUTIONARY STATEMENTS

#### HAZARDS TO HUMANS AND DOMESTIC ANIMALS

**CAUTION:** Causes moderate eye irritation. Harmful if swallowed, inhaled or absorbed through the skin. Do not get in eyes, on skin, or on clothing. Avoid breathing dust or spray mist. Wash thoroughly with soap and warm water after handling. Remove contaminated clothing and wash before reuse.

Wear safety glasses, goggles, or face shield when handling the undiluted material and wear a respirator when making general surface overhead treatments indoors.

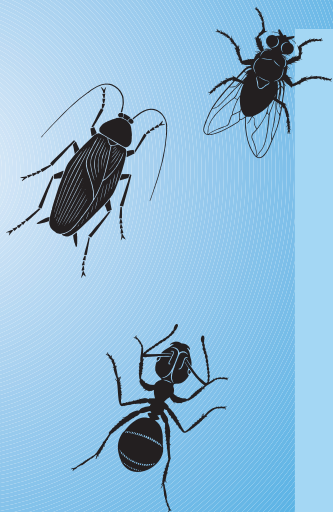
Do not allow children or pets to enter treated areas until surfaces are dry.

#### ENVIRONMENTAL HAZARDS

This pesticide is toxic to fish. Remove from premises or tightly cover fish tanks and disconnect aerators when applying indoors where such containers are present. Do not apply directly to water, or to areas where surface water is present or to intertidal areas below the mean high water mark. Drift and runoff from treated areas may be hazardous to aquatic organisms in neighboring areas. Do not contaminate water when disposing of equipment washwaters. Apply this product only as specified on this label.

This pesticide is highly toxic to bees exposed to direct treatment or residues on crops or weeds. Do not apply TEMPO® ULTRA WP Insecticide or allow it to drift onto crops or weeds on which bees are actively foraging. Additional information may be obtained by consulting your Cooperative Extension Service.

Refer to attached booklet for complete Directions for Use.



# TEMPO® ULTRA WP

## Insecticide

For Pest Management Professionals and commercial use only. For broad-spectrum control of crawling, flying, and wood infesting insect pests for indoor and outdoor surfaces, as well as insect pests of trees, landscape ornamentals and residential and commercial lawns.

**ACTIVE INGREDIENT:**

$\beta$ -Cyfluthrin, cyano(4-fluoro-3-phenoxyphenyl) methyl 3-(2,2-dichloroethenyl)-2,2-dimethylcyclo-propanecarboxylate ..... 10%

**OTHER INGREDIENTS** ..... 90%  
100%

EPA Reg. No. 432-1304 EPA Est. No. 33967-NJ-1

**STOP** - Read the label before use.

**Keep out of reach of children.**

# CAUTION

**IN CASE OF MEDICAL, ENVIRONMENTAL, OR TRANSPORTATION EMERGENCIES OR INJURIES, CALL 1-800-334-7577 (24 HOUR/DAY) For Product Information, Call Toll Free: 1-800-331-2867**

**BACKED**  
by **BAYER™**

**NET CONTENTS**  
**14.8 fl. oz. (420 grams)**

**2903524**  
**3408586 040615A**

## FIRST AID

<b>If on skin</b>	<ul style="list-style-type: none"><li>• Take off contaminated clothing.</li><li>• Rinse skin immediately with plenty of water for 15 to 20 minutes.</li><li>• Call a poison control center or doctor for treatment advice.</li></ul>
<b>If inhaled</b>	<ul style="list-style-type: none"><li>• Move person to fresh air.</li><li>• If person is not breathing, call 911 or an ambulance, then give artificial respiration, preferably mouth-to-mouth if possible.</li><li>• Call a poison control center or doctor for further treatment advice.</li></ul>
<b>If in eyes</b>	<ul style="list-style-type: none"><li>• Hold eye open and rinse slowly and gently with water for 15 to 20 minutes. Remove contact lenses, if present, after the first 5 minutes, then continue rinsing eye.</li><li>• Call a poison control center or doctor for treatment advice.</li></ul>
<b>If swallowed</b>	<ul style="list-style-type: none"><li>• Call a poison control center or doctor immediately for treatment advice.</li><li>• Have person sip a glass of water if able to swallow.</li><li>• Do not induce vomiting unless told to do so by a poison control center or doctor.</li><li>• Do not give anything to an unconscious person.</li></ul>
Have the product container or label with you when calling a poison control center or doctor or going for treatment. You may also contact 1-800-334-7577 for emergency medical treatment.	
<b>Note To Physician:</b> No specific antidote is available. Treat the patient symptomatically.	

## PRECAUTIONARY STATEMENTS

### HAZARDS TO HUMANS AND DOMESTIC ANIMALS

**CAUTION:** Causes moderate eye irritation. Harmful if swallowed, inhaled or absorbed through the skin. Do not get in eyes, on skin, or on clothing. Avoid breathing dust or spray mist. Wash thoroughly with soap and warm water after handling. Remove contaminated clothing and wash before reuse.

Wear safety glasses, goggles, or face shield when handling the undiluted material and wear a respirator when making general surface overhead treatments indoors. Do not allow children or pets to enter treated areas until surfaces are dry.

### ENVIRONMENTAL HAZARDS

This pesticide is toxic to fish. Remove from premises or tightly cover fish tanks and disconnect aerators when applying indoors where such containers are present. Do not apply directly to water, or to areas where surface water is present or to intertidal areas below the mean high water mark. Drift and runoff from treated areas may be hazardous to aquatic organisms in neighboring areas. Do not contaminate water when disposing of equipment washwaters. Apply this product only as specified on this label.

This pesticide is highly toxic to bees exposed to direct treatment or residues on crops or weeds. Do not apply TEMPO® ULTRA WP Insecticide or allow it to drift onto crops or weeds on which bees are actively foraging. Additional information may be obtained by consulting your Cooperative Extension Service.

<b>PRO FACTS</b>	
<ul style="list-style-type: none"> <li>• Quick Knockdown &amp; Residual Control</li> <li>• Low Odor</li> <li>• Non-staining</li> <li>• No phytotoxicity on a wide range of ornamentals</li> </ul>	
<b>TEMPO ULTRA WP</b>	<ul style="list-style-type: none"> <li>• Wettable powder containing 10% <i>beta</i>-cyfluthrin</li> </ul>
<b>CONTROLS</b>	<ul style="list-style-type: none"> <li>• Indoor Pests               <ul style="list-style-type: none"> <li>- General Household Pests</li> <li>- Pantry and Stored Product Pests</li> <li>- Food Processing Pests</li> </ul> </li> <li>• Outdoor/ Perimeter Pests</li> <li>• Wood-Infesting Pests</li> <li>• Turf and Ornamental Pests</li> </ul> <p><i>For list of specific insects, see inside.</i></p>
<b>WHERE TO APPLY</b>	<ul style="list-style-type: none"> <li>• Apply where pests have been seen or found, or can find shelter.</li> <li>• In and around buildings and structures</li> <li>• On residential, commercial and recreational areas of turf</li> <li>• On ornamentals in landscapes and interior plantscapes</li> </ul>

<b>PRO FACTS</b> <i>(Continued)</i>	
<b>COVERAGE</b>	<ul style="list-style-type: none"> <li>• Makes up to 42 gallons of finished spray solution for indoors. (420 g size)</li> <li>• Treats up to 84,000 square feet. outdoors. (420 g size)</li> </ul>
<b>MIXING INFORMATION</b>	<ul style="list-style-type: none"> <li>• Mix the appropriate amount of TEMPO ULTRA WP with water.</li> <li>• May tank mix with other pesticides currently registered for similar uses, unless specifically prohibited.</li> </ul>
<b>HOW TO APPLY</b>	<ul style="list-style-type: none"> <li>• General surface spot, mist, or crack &amp; crevice application.</li> <li>• Broadcast application to turf and foliar application to ornamentals.</li> </ul>
<b>RE-APPLY</b>	<ul style="list-style-type: none"> <li>• Every 7 to 10 days, if needed.</li> <li>• For turf, reapply if needed, but not more than 6 times per year.</li> </ul>
<b>RE-ENTRY</b>	<ul style="list-style-type: none"> <li>• Avoid contact with treated surfaces until dry.</li> <li>• People and pets may re-enter after the treated area is dry.</li> </ul>
<b>QUESTIONS</b>	For questions or comments, call toll-free 1-800-331-2867 <a href="http://www.BackedByBayer.com">www.BackedByBayer.com</a>

### **DIRECTIONS FOR USE**

It is a violation of Federal law to use this product in a manner inconsistent with its labeling.

**IMPORTANT:** Read entire label and Conditions of Sale before using this product.  
**Do not formulate this product into other end-use products.**

### **STRUCTURAL PESTS**

FOR RESIDUAL PEST CONTROL IN AND AROUND BUILDINGS, STRUCTURES, FOOD/FEED HANDLING ESTABLISHMENTS AND MODES OF TRANSPORT

Use TEMPO ULTRA WP as a general surface, spot, mist, or crack and crevice treatment in and around buildings and structures. This includes schools, factories, stores, warehouses, hospitals, food processing facilities, and modes of transport. For a list of common facilities where this product may be used, see Appendix.



<b>INDOOR PESTS</b>			
<b>General Household Pests</b>			
<u>Crawling Pests</u>			<u>Flying Pests</u>
Ants (except Pharaoh)	Cockroaches	Pillbugs	Flies
Bedbugs	Crickets	Silverfish	Gnats
Carpet beetles	Darkling beetles	Sowbugs	Hornets
Centipedes	Earwigs	Spiders	Midges
Clothes moths	Firebrats		Moths
Cluster flies	Millipedes		Wasps
			Yellow jackets
<b>Pantry &amp; Stored Product Pests</b>			
<u>Beetles</u>			<u>Moths</u>
(exposed adults & immature stages)	Granary weevil	Mealworm	Indian meal
Cadelle	Hide	Red flour	Mediterranean
Cigarette	Larder	Rice weevil	flour
Confused flour	Leather	Sawtoothed	
Dermestid	Lesser grain borer	grain	
Drugstore	Lesser mealworm	Warehouse	
	Merchant grain		
<b>Food Processing Pests</b>			
Fruit flies	Also includes:		
Phorid flies	General Household Pests		
Sciarid flies	Pantry & Stored Product Pests		
<b>WHERE TO APPLY</b>	Apply where pests have been seen or found, or can find shelter. Use a general surface, spot, mist, or crack and crevice application.		
<b>USE RATE</b>	0.025% -- 10 g (2 scoops)/gallon water 0.05% -- 20 g (4 scoops)/gallon water • Use high rate for severe infestations, faster knockdown, and longer residual. • Always use the high rate for bees, wasps, yellow jackets and hornets.		

(Continued)

## INDOOR PESTS

### HOW TO APPLY (Also see APPLICATION FOR INDOOR PESTS)

- Remove or tightly cover fish tanks and disconnect aerators during application.
- Remove pets during application and until treated surfaces are completely dry.
- Avoid contact with treated surfaces until dry.
- Wear safety glasses, goggles, or face shield and a dust/mist respirator when treating overhead areas.

#### General Surface Applications

- Use a low-pressure system (do not exceed 50 psi at nozzle tip), with a fan-type nozzle to apply the dilution uniformly.
- In the home, all food processing surfaces and utensils should be covered or thoroughly washed following treatment. Cover exposed food or remove from area being treated.

#### Spot, Mist, or Crack and Crevice Applications

- Apply directly into voids, cracks and crevices using spray or foam equipment.
- Spray: Use a low-pressure system (do not exceed 50 psi at nozzle tip), with a pinpoint or variable pattern nozzle or applicator equipment that delivers low volume treatments, such as the Micro-Injector<sup>®</sup> or Actisol<sup>®</sup>.
- Foam: Use appropriate foam generating equipment to supply a sufficient volume of foam. Mix the dilution with manufacturer's recommended volume of foaming agent.

#### **WHEN TO APPLY**

- When pests are seen or found
- Re-apply every 7 to 10 days if needed.

#### **MIXING INFORMATION**

- Add product when filling spray tank with water; shake or agitate mixture.
- Diluted spray mixture can be stored overnight. Agitate before using. Can be tank mixed with other pesticides currently registered for similar uses. To be sure of physical compatibility, first prepare a sample in a small jar using the proper proportions of water and products. Follow the most restrictive of labeling directions and precautions. Do not exceed label rates.

## INDOOR PESTS *(Continued)*

### RESTRICTIONS

- **Do not** treat entire area of floor or floor coverings.
- **Do not** apply where electrical short circuits can occur. Use a dust or dry bait in these areas.
- **Do not** apply in occupied hospital and/or nursing home rooms. Occupants may return when surfaces have dried.
- **Do not** apply in occupied classrooms.
- **Do not** apply to furniture or upholstery where prolonged contact by humans will occur.
- **Do not** apply as a space spray

## ADDITIONAL DIRECTIONS FOR FOOD AND FEED HANDLING ESTABLISHMENTS

### WHERE TO APPLY

Applications may be made to both food/feed and non-food areas of food and feed handling establishments.

Food/feed handling establishments are defined as places other than private residences in which exposed food/feed is held, processed, prepared, or served.

Includes areas for:

- receiving, storing and packing (canning, bottling, wrapping, boxing) food
- preparing food
- edible waste storage
- enclosed processing systems (mills, dairies, edible oils, syrups) of food.

**Serving areas** where food is exposed and the facility is in operation are also considered food areas.

### USE RATE

- Apply as a general surface spot, mist, or crack & crevice application.  
0.025% -- 10 g (2 scoops)/gallon water  
0.05% -- 20 g (4 scoops)/gallon water
- Use high rate for severe infestations, faster knockdown, and longer residual.

*(Continued)*



## ADDITIONAL DIRECTIONS FOR FOOD AND FEED HANDLING ESTABLISHMENTS *(Cont)*

<p><b>HOW TO APPLY</b></p> <p><b>(Also see INDOOR PESTS)</b></p>	<p><u>General Surface Applications</u>            Cover or remove all food processing and handling equipment before treatment.            After applying where food is commercially prepared or processed, wash all handling and processing equipment, benches, shelving, and other surfaces which food will contact. Rinse thoroughly with clean, fresh water.  <b>Do not</b> apply to surfaces in food handling areas when facility is in use or when foods are exposed.  <b>Do not</b> apply directly to food.</p> <p><u>Spot or Crack &amp; Crevice Applications</u>            Spot or crack and crevice application is permitted while facility is in use. Cover or remove food from area being treated.  <b>Do not</b> apply directly to food or food handling surfaces.</p>
--	---

## APPLICATION FOR INDOOR PESTS

<p><b>GENERAL HOUSEHOLD PESTS</b>  <b>Cockroaches, Crickets, Silverfish, Spiders, and others</b></p>	<ul style="list-style-type: none"> <li>• Use a coarse, low-pressure spray.</li> <li>• Treat entry points such as around water pipes, doors, windows, and eaves. Treat areas where pests normally feed or hide such as baseboards, corners, around water pipes, under refrigerators, cabinets, sinks, and stoves, being sure to spray cracks &amp; crevices. Spot treat floor or rugs beneath furniture, in closets, and storage areas, but do not apply to entire floor area.</li> <li>• <b>Do not</b> use as a “space spray.”</li> <li>• <b>IGR Note:</b> This product can be tank mixed with an insect growth regulator (IGR) for extended cockroach control.</li> </ul>
<p><b>ANTS</b></p>	<ul style="list-style-type: none"> <li>• Apply to ant trails on walls, tile, baseboards, around pipes, under cabinets, and other places where ants are active.</li> <li>• Treat entry points such as windows and doors and the outdoor perimeter.</li> </ul>

*(Continued)*

<b>APPLICATION FOR INDOOR PESTS</b> <i>(Continued)</i>	
<b>ANTS</b> <i>(Continued)</i>	•For best results, treat nests when possible.
<b>PANTRY AND STORED PRODUCT PESTS</b>	<ul style="list-style-type: none"> <li>•For best results, clean area before treating. Remove and destroy infested food. Discard food accidentally contaminated with spray.</li> <li>•For cupboards, shelving, or food storage areas: Remove utensils, exposed food, shelf paper, and other items before spraying. When dried, cover shelves with clean paper before replacing items.</li> </ul>
<b>COMMERCIAL STORED PRODUCT PESTS</b>	•Commercial storage or transportation: Clean and treat warehouses, production facilities, storage areas, rail cars, truck beds, and other areas where products are stored <i>before</i> filling with the product.
<b>PESTS IN AIRCRAFT</b>	•For use only in aircraft cargo holds
<b>PESTS IN LIVESTOCK HOUSING STRUCTURES including poultry houses &amp; pet kennels</b>	<ul style="list-style-type: none"> <li>•Apply as a general surface and/or a crack and crevice spray.</li> <li>•For best results, clean facilities before applying and treat outdoor perimeter areas.</li> <li>•<b>Do not</b> apply indoors where animals other than cattle or horses are present.</li> <li>•<b>Do not</b> apply to animal feedstuffs or watering equipment.</li> </ul>
<b>FLYING INSECTS</b>	•Apply to surfaces where pests collect or rest.

### **STRUCTURAL PESTS**

<b>OUTDOOR/PERIMETER PESTS</b>				
Ants	Cluster flies	Flies	Moths	Ticks
Bees	Crickets	Gnats	Pillbugs	Wasps
Boxelder bugs	Elm leaf beetles	Ground beetles	Scorpions	Yellow jackets
Carpenter ants	Fire ants	Hornets	Silverfish	
Centipedes	Firebrats	Midges	Sowbugs	
Cockroaches	Fleas	Millipedes	Spiders	

*(Continued)*

<b>OUTDOOR/PERIMETER PESTS</b> <i>(Continued)</i>	
<b>WHERE TO APPLY</b>	<ul style="list-style-type: none"> <li>• Apply where pests have been seen or found, or can find shelter.</li> <li>• Apply to buildings, porches, patios, garages, fences and other areas where pests are found.</li> <li>• To prevent infestation, treat the building foundation, walls, and around doors, windows, and soffits where pests are active or may enter or hide; also treat the soil, turf, or other substrates adjacent to buildings.</li> </ul>
<b>USE RATE</b>	<ul style="list-style-type: none"> <li>• 10 to 20 g (2 to 4 scoops)/1,000 square feet See Table 1 for mixing directions.</li> <li>• For fire ants and flying pests 0.025% -- 10 g (2 scoops)/gallon water 0.05% -- 20 g (4 scoops)/gallon water</li> <li>• Always use the high rate for fire ants, bees, wasps, yellow jackets and hornets.</li> <li>• Use high rate for severe infestations, faster knockdown, and longer residual.</li> </ul>
<b>HOW TO APPLY</b>  (Also see APPLICATIONS FOR OUTDOOR/PERIMETER PESTS)	<ul style="list-style-type: none"> <li>• <u>Perimeter Treatment:</u> To help prevent infestation of structures, treat area adjacent buildings in a band up to 10 feet wide. Also treat the building foundation to a height of 2 to 3 feet in areas where pests are active or can find entrance.</li> <li>• Apply just enough dilution to adequately cover the area without excessive dripping or runoff. Volume can vary depending on the surface type treated. For example, mulch requires more spray than bare soil. If mulch is heavy, rake it back to expose soil before treating.</li> <li>• Avoid contact with treated surfaces until dry.</li> </ul>
<b>WHEN TO APPLY</b>	<ul style="list-style-type: none"> <li>• When pests are seen or found</li> <li>• Re-apply every 7 to 10 days if needed.</li> </ul>
<b>MIXING INFORMATION</b>	<ul style="list-style-type: none"> <li>• Add product when filling spray tank with water; shake or agitate mixture.</li> </ul>

*(Continued)*

## OUTDOOR/PERIMETER PESTS (Continued)

### MIXING INFORMATION (Continued)

- Diluted spray mixture can be stored overnight. Agitate before using.
- Can be tank mixed with other pesticides currently registered for similar uses. To be sure of physical compatibility, first prepare a sample in a small jar using the proper proportions of water and products. Follow the most restrictive of labeling directions and precautions. Do not exceed label rates.

**Table 1: Mixing Directions for Outdoor/Perimeter Applications**

Application Volume: Gallons/1,000 sq. ft.	Use Rate: Grams/ 1,000 sq. ft.	Scoops* of TEMPO ULTRA WP Diluted to These Volumes of Finished Spray			
		3 gal.	10 gal.	15 gal.	25 gal.
2	10	3	10	15	25
	20	6	20	30	50
5	10	1	4	6	10
	20	2	8	12	20
10	10	--	2	3	5
	20	--	4	6	10

\* 1 level scoop = 5 grams

### Formula for Determining the Percent Concentration in the Finished Spray

$$\frac{(\text{Scoops of TEMPO ULTRA WP})}{(\text{Gallons of finished spray}) \times 75.7} = \text{Percent Concentration}$$

## APPLICATION FOR OUTDOOR/PERIMETER PESTS

### ANTS

Locate and treat ant nests, if possible. Follow trails of foraging workers, check under objects near the structure, and inspect other likely nest sites. If ants are nesting in the soil, thoroughly drench or inject the nest

(Continued)

<b>APPLICATION FOR OUTDOOR/PERIMETER PESTS</b> <i>(Continued)</i>	
<b>ANTS</b> <i>(Continued)</i>	and surrounding soil. Treat ant trails around windows and doors, along sidewalks, or other areas where seen. Apply a perimeter treatment as described above.
<b>BEEES, WASPS, YELLOW JACKETS, HORNETS</b>	Use Rate: 0.05% concentration Make pin stream applications directly to the nests. To help avoid stings treat nests in the evening when the insects are inside the nest. For best results, check nests within one or two days to ensure complete kill. Remove and destroy treated nests to prevent emergence of newly hatched insects, secondary pest problems, and possible staining from honey. If removal is not possible, retreat nests if necessary.
<b>BOXELDER BUGS</b>	Apply directly to boxelder bugs that have congregated around doors and windows and similar areas where they may enter structures. Apply perimeter treatment as described above. For best results, treat infested trees early in the season. Tree spraying may require ornamental license – check with your local regulator.
<b>CENTIPEDES, MILLIPEDES, PILLBUGS, SOWBUGS</b>	Apply perimeter treatment to reduce the number of insects from entering the structure. Thoroughly treat mulched areas. Reduce moisture areas from around the structure.
<b>FIRE ANTS</b>	Use Rate: 0.05% concentration Thoroughly drench or inject the entire mound. When using injection treatment, you must treat the bottom of the mound. Apply dilution or foam using a downward and upward motion of the injector tool. For complete distribution, inject in several points throughout the mound. Treat new mounds as they appear. <b>Do not</b> use in pastures or areas of food crop production.
<b>FLEAS &amp; TICKS</b>	Make a perimeter treatment, concentrating on areas where pets rest or run. For ticks, treat likely harborage areas like along paths, tall

*(Continued)*

<b>APPLICATION FOR OUTDOOR/PERIMETER PESTS</b> <i>(Continued)</i>	
<b>FLEAS &amp; TICKS</b> <i>(Continued)</i>	grass and other vegetation. For best results, treat the entire area where ticks could be present. Begin treating in the spring. Ticks may be re-introduced from surrounding areas by host animals. Continue treating until frost to control both larvae and adult ticks.
<b>FLIES</b>	Use Rate: 0.025% to 0.05% concentration Apply low-volume mist or spray to outside surfaces of buildings, porches, patios, garages, fences, and other areas where flies rest. <b>CLUSTER FLIES:</b> Treat in late summer or fall, just before flies begin looking for winter shelter. Spray siding, eaves, around windows and doors, window screens, and attics. To help reduce infestations, treat cracks and crevices, attics and other indoor winter hiding places. Note: Cluster flies may appear during winter warm spells, while snow is still on the ground.
<b>MOSQUITOES</b>	Spray around landscape plants, turf and ground cover, under decks, around building foundations and other places where mosquitoes may rest.
<b>SCORPIONS</b>	Treat around piles of firewood and other areas where scorpions may hide. When possible, remove piles of materials that can harbor the pests. Apply a perimeter treatment.

### **STRUCTURAL PESTS**

<b>WOOD-INFESTING PESTS</b>			
<u>Beetles</u> Ambrosia Deathwatch False powderpost	Old house borer Powderpost	Carpenter ants Carpenter bees	<u>Termites</u> Subterranean Formosan Drywood
<b>WHERE TO APPLY</b>	Apply where pests have been seen or found, or can find shelter.		
<b>USE RATE</b>	0.05% -- 20 g (4 scoops)/gallon water		

*(Continued)*



<b>WOOD-INFESTING PESTS</b> <i>(Continued)</i>	
<b>HOW TO APPLY</b> (Also see Application section)	<ul style="list-style-type: none"> <li>• Apply spray or foam as described in application section.</li> <li>• Avoid contact with treated surfaces until dry.</li> </ul>
<b>WHEN TO APPLY</b>	<ul style="list-style-type: none"> <li>• When pests are seen or found</li> <li>• Re-apply every 7 to 10 days if needed.</li> </ul>
<b>MIXING INFORMATION</b>	<ul style="list-style-type: none"> <li>• Add product when filling spray tank with water; shake or agitate mixture.</li> <li>• Diluted spray mixture can be stored overnight. Agitate before using.</li> <li>• Can be tank mixed with other pesticides currently registered for similar uses. To be sure of physical compatibility, first prepare a sample in a small jar using the proper proportions of water and products. Follow the most restrictive of labeling directions and precautions. Do not exceed label rates.</li> <li>• <u>Foam applications:</u> Mix end-use dilution with manufacturer's recommended volume of foaming agent for 0.025% to 0.05% concentration.</li> </ul>

<b>APPLICATION FOR WOOD-INFESTING PESTS</b>	
<b>CARPENTER ANTS</b>	<p><u>In houses and other structures:</u> Apply around doors and windows and other places where carpenter ants may enter. Spray or foam into cracks &amp; crevices, or spray, mist or foam through small drilled holes into voids where ants or nests are present. Use enough spray or foam to cover the area. Do not exceed 1 gallon of dilution per 1,000 square feet.</p> <p>Inside trees, utility poles, fencing and decking materials and similar structural members: Drill to find the interior infested cavity and inject dilution or foam using an appropriate treatment tool with a splashback guard.</p>

*(Continued)*

## APPLICATION FOR WOOD-INFESTING PESTS *(Continued)*

<p><b>CARPENTER ANTS</b> <i>(Continued)</i></p>	<p><u>Tunneling in soil:</u> Apply as a soil drench or inject the dilution or foam in the soil at intervals of 8 to 12 inches. Use 1 gallon of dilution per 8 square feet. Establish a uniform vertical barrier at the edge of walls, driveways or other hard surfaces where ants are tunneling beneath the surfaces.</p> <p><u>Protecting firewood from carpenter ants:</u> Treat soil beneath firewood before stacking at 1 gallon of dilution per 8 square feet.</p> <p><b>Do not</b> treat firewood with this product.</p>
<p><b>CARPENTER BEES</b></p>	<p><u>In structures:</u> Spray or foam directly into gallery entrance holes. Leave entrance open for 24 hours to be sure that returning adult bees are killed. When there is no activity, the hole may be sealed with a suitable sealant.</p>
<p><b>WOOD-INFESTING BEETLES</b></p>	<p>On surfaces in homes, apartments, and other structures For small areas, brush or spray evenly on wood surfaces. For large or overhead areas, thoroughly cover wood surfaces with a coarse spray.</p> <p>Protect surfaces below the treated area from accidental dripping by covering with disposable plastic sheeting or other material that can be thrown away after treatment.</p> <p><u>In localized areas:</u> Apply dilution or foam to voids and galleries in damaged wood, in spaces between wooden structural members, and between the sill plate and foundation. Apply to inaccessible areas by drilling, and then injecting, spraying, or misting the dilution or foam into the damaged wood or wall voids.</p>
<p><b>DRYWOOD AND ABOVE-GROUND SUB-TERRANEAN TERMITES</b></p>	<p>This type of application is intended to be a supplemental treatment for control of drywood and above-ground subterranean termites and other wood-infesting insects.</p> <p><u>In localized areas:</u> Apply dilution or foam to voids and galleries in damaged wood, to spaces between wooden structural members, and between the sill plate and foundation. Apply to inaccessible areas by drilling, and then injecting, spraying, or misting the dilution or foam</p>

## APPLICATION FOR WOOD-INFESTING PESTS *(Continued)*

<p><b>DRYWOOD AND ABOVE-GROUND SUB-TERRANEAN TERMITES</b> <i>(Continued)</i></p>	<p>into damaged wood or wall voids.</p> <p><u>Swarming or reproductive stages:</u> Apply dilution to the swarm or area on which the termites collect. Make applications to attics, crawl spaces, unfinished basements or man-made voids with a coarse fan spray to control exposed reproductive forms of termites.</p> <p><u>Above-ground termites inside trees, utility poles, fencing and decking materials and similar structural members:</u> Drill to find the infested cavity and inject dilution or foam using an appropriate tool with a splashback guard.</p> <p><u>Termite carton nests:</u> Inject dilution or foam into building voids or tree cavities using a pointed injection tool. Several injection points to varying depths may be needed. For best results, remove carton nest material when possible.</p> <p><u>Protecting firewood from termites:</u> Treat soil beneath firewood before stacking at 1 gallon of dilution per 8 square feet.</p> <p><b>Do not</b> treat firewood with this product.</p>
--	---

## TURF PESTS

TEMPO ULTRA WP controls designated pests on landscape and recreational turf.		
TURF PESTS		USE RATE
<p>Ants Armyworms Crickets Cutworms Earwigs</p>	<p>Grasshoppers Japanese beetles (adult) Sod webworms Ticks (including deer ticks)</p>	<p>5 to 10 grams (1 to 2 scoops) per 1,000 square feet or 7.7 to 15.4 oz. per acre</p> <p>Use high rate for severe infestations, faster knockdown, and longer residual.</p>
<p>Black turfgrass Ataenius (adults) Bluegrass billbug (adult) Chinch bugs Chiggers</p>		<p>10 grams (2 scoops) per 1,000 square feet or 15.4 oz. per acre</p>

*(Continued)*

## TURF PESTS *(Continued)*

<b>TURF PESTS</b>		<b>USE RATE</b>
Fire ants (aids in control) Fleas Hyperodes weevil (adult)	Mole crickets Scorpions	10 grams (2 scoops) per 1,000 square feet or 15.4 oz. per acre
<b>WHERE TO APPLY</b>	For use on landscape and recreational turfgrass. Not for use on turf grown for research, commercial seed production, sale, or other commercial use. Not for use on golf course turf. Apply where pests have been seen or found, or can find shelter. Permitted areas include but are not limited to: Home lawns, business complexes, apartment buildings, airports, cemeteries, parks, playgrounds, recreational fields, institutional grounds, athletic fields, and other landscape turf grass.	
<b>HOW TO APPLY (Also see APPLICATION FOR TURF PESTS)</b>	Use an accurately calibrated sprayer. Apply uniformly using spray nozzles with a coarse droplet size such as flood jet nozzles. Keep children and pets off treated areas until lawn has dried.	
<b>WHEN TO APPLY</b>	Apply when pests first appear. Reapply as needed based on pest reinfestation. Do not treat more than 6 times per year. Consult your state Cooperative Extension Office for the specific timing in your area.	
<b>MIXING INFORMATION</b>	<ul style="list-style-type: none"> <li>• Add product when filling spray tank with water; shake or agitate mixture.</li> <li>• Diluted spray mixture can be stored overnight. Agitate before using.</li> </ul> Can be tank mixed with other pesticides currently registered for similar uses. Follow the most restrictive of labeling directions and precautions. Do not exceed label rates.	

*(Continued)*

## TURF PESTS *(Continued)*

<b>MIXING INFORMATION</b> <i>(Continued)</i>	COMPATABILITY: Compatible with commonly used fungicides, miticides, liquid fertilizers and other insecticides. To be sure of physical compatibility, first prepare a sample in a small jar using the proper proportions of water and products.
<b>RESTRICTIONS</b>	<ul style="list-style-type: none"> <li>• <b>Do not</b> apply this product by aerial application or by any type of chemigation system.</li> <li>• <b>Do not</b> apply when the average wind speed is greater than 15 mph.</li> <li>• <b>Do not</b> allow drift onto ponds, streams, or lakes.</li> <li>• <b>Do not</b> apply when turf grass areas are water logged or the soil is saturated with water (i.e., will not accept irrigation).</li> </ul>

## APPLICATION FOR TURF PESTS

<b>ARMYWORMS, CUTWORMS, SOD WEBWORMS</b>	<b>Do not</b> water or mow for at least 24 hours following application.
<b>BILLBUGS</b>	Apply when adults first appear in the spring. In temperate climates, this application will also control overwintering chinch bugs.
<b>CHINCH BUGS</b>	For best results, water the turf immediately after application to aid in the penetration of the active ingredient into the thatch layer where chinch bugs dwell.
<b>TICKS (Including ticks that transmit Lyme Disease and Rocky Mountain Spotted fever)</b>	For best results, treat the entire area where ticks could be present. Begin treating in the spring. Ticks may be reintroduced from surrounding areas by host animals. Continue treating until frost to control both larvae and adult ticks.

## ORNAMENTAL PESTS

TEMPO ULTRA WP controls designated pests on trees, shrubs, foliage plants and flowers in outdoor landscaped areas and interior plantscapes where these plants are grown.

**ORNAMENTAL PESTS** *(Continued)*

Ants	Elm leaf beetles	Mealybugs	Spiders
Aphids	Elm spanworms	Midges	Spittlebugs
Armyworms	*Emerald Ash Borer	Mosquitoes	Striped cucumber
Azalea caterpillars	(Adult)	Oleander moth	beetles
Bagworms	Flea beetles	larvae	Striped oakworms
Black vine weevil	Flies	Orchid weevil	Tent caterpillars
(adult)	Fungus gnats	Pear psylla	Thrips
Boxelder bugs	Grasshoppers	Peppertree psyllid	Ticks (including
Bristly rose slugs	Gypsy moth larvae	Pillbugs	deer ticks)
Budworms	Japanese beetles	Pine shoot moths	Tussock moth
California	(adult)	Pine tip moths	larvae
oakworms	June beetles (adult)	Plant bugs	Wasps
Cankerworms	Lace bugs	Redhumped	Walnut caterpillars
Casebearers	Leaf-feeding	caterpillars	Webworms
Clover mites	caterpillars	Sawfly larvae	Whiteflies
Cockroaches	Leafhoppers	Scale insects	Yellownecked
Crickets	Leafrollers	(crawler stages)	caterpillars
Cutworms	Leaf skeletonizers	Sowbugs	

<b>WHERE TO APPLY</b>	Use in landscapes and interiorscapes. Permitted areas include but are not limited to: Parks, recreational areas, athletic fields, institutional grounds, hotels, malls, office buildings, and airports. Not for use on plants or turf grown for research, commercial seed production, sale, or other commercial use. Not for use in greenhouses or nurseries. Apply where pests are seen, have been found, or can find shelter among trees, shrubs, evergreens, ground covers, flowers, and foliage plants.
-----------------------	---

*(Continued)*

\* For emerald ash borer, make a minimum of two applications per season. The first application should be made in late-May/early June, or when adult beetles begin flying. Subsequent applications should be made approximately one month after the previous application.



<b>ORNAMENTAL PESTS</b> <i>(Continued)</i>	
<b>WHERE TO APPLY</b> <i>(Continued)</i>	No phytotoxicity has been observed on a wide range of ornamentals tested under various environmental conditions. If in doubt, first try this product on a small sample.
<b>USE RATE</b>	<ul style="list-style-type: none"> <li>• 55 to 190 grams TEMPO ULTRA WP per 100 gallons of water</li> <li>• Use high rate for severe infestations, faster knockdown, and longer residual.</li> </ul>
<b>HOW TO APPLY</b> <i>(Also see APPLICATION FOR ORNAMENTAL PESTS)</i>	<p>Apply as a dilute spray just to the point of run-off but do not allow excess run-off. For hard-to-wet foliage such as holly, pine or ivy, adding a spreader/sticker may enhance knockdown and residual activity. For best results, spray thoroughly for good coverage including the underside of leaves for pests that feed or rest there.</p> <ul style="list-style-type: none"> <li>• Spray plants in bloom at time when pollinating insects are not present, such as early morning or late evening.</li> </ul>
<b>WHEN TO APPLY</b>	<ul style="list-style-type: none"> <li>• Apply when pests first appear. Reapply as needed based on pest infestation.</li> <li>• Consult your state Cooperative Extension Office for the specific timing in your area.</li> </ul>
<b>MIXING INFORMATION</b>	<ul style="list-style-type: none"> <li>• Add product when filling spray tank with water; shake or agitate mixture.</li> <li>• Diluted spray mixture can be stored overnight. Agitate before using.</li> </ul> <p>Can be tank mixed with other pesticides currently registered for similar uses. Follow the most restrictive of labeling directions and precautions. Do not exceed label rates.</p> <p>COMPATABILITY: Compatible with commonly used fungicides, miticides, liquid fertilizers and other insecticides. To be sure of physical compatibility, first prepare a sample in a small jar using the proper proportions of water and products.</p>
<b>RESTRICTIONS</b>	<ul style="list-style-type: none"> <li>• Do not apply to any food crop.</li> <li>• Do not allow drift onto ponds, streams or lakes.</li> </ul>

<b>APPLICATION FOR ORNAMENTAL PESTS</b>	
<b>ANTS, CRICKETS, SPIDERS, MIDGES, WASPS AND FLIES</b>	Apply as a general spray, concentrating on damp areas beneath shrubbery, around foundations and in areas of tall grass or weeds in ornamental areas and areas adjacent to buildings.
<b>BAGWORMS</b>	Spray when bagworms first begin to hatch. If possible, apply directly to the larvae. Young larvae are easier to control.
<b>BLACK VINE WEEVIL (adult)</b>	Use rate: 75 to 190 grams per 100 gallons of water. Apply as needed when adults and damage are first noticed in spring and at 3 to 4 week intervals while weevils and notching are observed. Addition of a spreader/sticker at recommended rates may enhance control of insects on certain species of ornamentals having difficult to wet foliage.
<b>COCKROACHES</b>	Spray hiding or resting places such as under shrubbery, in ground covers and mulching materials, in hollow trees, etc.
<b>SCALE (CRAWLERS)</b>	Spray thoroughly, including foliage, trunk, limbs, and twigs.

### **STORAGE AND DISPOSAL**

<b>Do not</b> contaminate water, food, or feed by storage or disposal.	
<b>Storage:</b>	<ul style="list-style-type: none"> <li>•Store in a cool, dry place and in such a manner as to prevent cross contamination with other pesticides, fertilizers, food, or feed.</li> <li>•Protect from freezing.</li> <li>•Store in original containers and out of the reach of children, preferably in a locked storage area.</li> <li>•Handle and open container in a manner as to prevent spillage.</li> </ul>
<b>Pesticide Disposal:</b>	<ul style="list-style-type: none"> <li>•Pesticide wastes are hazardous.</li> <li>•Improper disposal of excess pesticide, spray mixture, or rinsate is a violation of Federal law.</li> <li>•If these wastes cannot be disposed of by use according to label instructions, contact your State Pesticide or Environmental Control</li> </ul>

*(Continued)*

## STORAGE AND DISPOSAL (Continued)

<b>Pesticide Disposal:</b> (Continued)	Agency, or the Hazardous Waste representative at the nearest EPA Regional Office for guidance.
<b>Container Disposal:</b>	<ul style="list-style-type: none"><li>• Non-refillable container. Do not reuse or refill this container. Offer for recycling, if available. Offer for reconditioning, if appropriate, Triple rinse container (or equivalent) promptly after emptying. Triple rinse as follows: Empty the remaining contents into application equipment or a mix tank. Fill the container 1/4 full with water and recap. Shake for 10 seconds. Pour rinsate into application equipment or a mix tank or store rinsate for later use or disposal. Drain for 10 seconds after the flow begins to drip. Repeat this procedure two more times.</li><li>• Do not use container in connection with food, feed, or drinking water.</li><li>• Dispose of container by offering for recycling or reconditioning. Or puncture and dispose of container in a sanitary landfill, or by incineration, or, if allowed by state and local authorities by burning. If burned, stay out of smoke.</li></ul>
<b>Spills:</b>	<p>If the container is leaking or material is spilled for any reason or cause, carefully sweep material into a pile. Refer to Precautionary Statements on label for hazards associated with the handling of this material.</p> <ul style="list-style-type: none"><li>• <b>Do not</b> walk through spilled material.</li><li>• Dispose of as directed for pesticides above.</li><li>• Keep unauthorized people away.</li><li>• You may contact the Bayer Emergency Response Team for decontamination procedures or any other assistance at 1-800-334-7577.</li></ul>

### IMPORTANT: READ BEFORE USE

Read the entire Directions for Use, Conditions, Disclaimer of Warranties and Limitations of Liability before using this product. If terms are not acceptable, return the unopened product container at once.

By using this product, user or buyer accepts the following Conditions, Disclaimer of Warranties and Limitations of Liability.

**CONDITIONS:** The directions for use of this product are believed to be adequate and should be followed carefully. However, it is impossible to eliminate all risks associated with the use of this product. Crop injury, ineffectiveness or other unintended consequences may result because of such factors as weather conditions, presence of other materials, or the manner of use or application, all of which are beyond the control Bayer CropScience LP. All such risks shall be assumed by the user or buyer.

**DISCLAIMER OF WARRANTIES:** BAYER CROPSCIENCE LP, MAKES NO OTHER WARRANTIES, EXPRESS OR IMPLIED, OF MERCHANTABILITY OR OF FITNESS FOR A PARTICULAR PURPOSE OR OTHERWISE, THAT EXTEND BEYOND THE STATEMENTS MADE ON THIS LABEL. No agent of Bayer CropScience LP is authorized to make any warranties beyond those contained herein or to modify the warranties contained herein. Bayer CropScience LP disclaims any liability whatsoever for special, incidental or consequential damages resulting from the use or handling of this product.

**LIMITATIONS OF LIABILITY:** THE EXCLUSIVE REMEDY OF THE USER OR BUYER FOR ANY AND ALL LOSSES, INJURIES OR DAMAGES RESULTING FROM THE USE OR HANDLING OF THIS PRODUCT, WHETHER IN CONTRACT, WARRANTY, TORT, NEGLIGENCE, STRICT LIABILITY OR OTHERWISE, SHALL NOT EXCEED THE PURCHASE PRICE PAID, OR AT BAYER CROPSCIENCE LP'S ELECTION, THE REPLACEMENT OF PRODUCT.

## APPENDIX

**Use TEMPO ULTRA WP as a general surface, spot, mist, or crack and crevice treatment.**

**Permitted areas of use in buildings, structures, and modes of transport include, but are not limited to:**

- |                       |   |  |
|-----------------------|---|--|
| • apartment buildings | • candy plants                                | • frozen food plants                             |
| • bakeries            | • cereal processing and manufacturing plants  | • grain mills                                    |
| • bottling facilities | • correctional facilities                     | • granaries                                      |
| • breweries           | • dairies and dairy product processing plants | • greenhouses (structures only) (non commercial) |
| • buses               |   |  |
| • cafeterias          |   |  |

*(Continued)*

**APPENDIX (Continued)**

**Use TEMPO ULTRA WP as a general surface, spot, mist, or crack and crevice treatment.**

**Permitted areas of use in buildings, structures, and modes of transport include, but are not limited to:**

- |                                |                                 |   |
|--------------------------------|---------------------------------|---|
| • hospitals                    | • mausoleums                    | • spice plants  |
| • hotels                       | • meat and produce canneries    | • stores  |
| • houses                       | • nursing homes                 | • warehouses  |
| • industrial buildings         | • pickle factories              | • wineries and similar structures   |
| • kitchens                     | • poultry houses                | • transportation vessels such as aircraft, buses, trucks, trailers, rail cars, and marine vessels |
| • laboratories                 | • processing and packing plants |   |
| • livestock housing            | • restaurants                   |   |
| • pet kennels                  | • schools                       |   |
| • manufacturing establishments |                                 |   |

Micro-Injector® is a registered trademark of Whitmire Micro-Gen Research Laboratories Inc.

Actisol® is a registered trademark of Aventis Environmental Health, Inc.

Bayer (reg'd), the Bayer Cross (reg'd), Tempo® and Backed by Bayer™ are trademarks of Bayer.



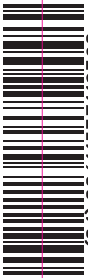
## Bayer Environmental Science

A Business Group of Bayer CropScience LP

2 T. W. Alexander Drive

Research Triangle Park, NC 27709

[www.BackedByBayer.com](http://www.BackedByBayer.com)



0061537112380

FIRST AID	
<b>If on skin</b>	<ul style="list-style-type: none"> <li>Take off contaminated clothing.</li> <li>Rinse skin immediately with plenty of water for 15 to 20 minutes.</li> <li>Call a poison control center or doctor for treatment advice.</li> </ul>
<b>If inhaled</b>	<ul style="list-style-type: none"> <li>Move person to fresh air.</li> <li>If person is not breathing, call 911 or an ambulance, then give artificial respiration, preferably mouth-to-mouth if possible.</li> <li>Call a poison control center or doctor for further treatment advice.</li> </ul>
<b>If in eyes</b>	<ul style="list-style-type: none"> <li>Hold eye open and rinse slowly and gently with water for 15 to 20 minutes. Remove contact lenses, if present, after the first 5 minutes, then continue rinsing eye.</li> <li>Call a poison control center or doctor for treatment advice.</li> </ul>
<b>If swallowed</b>	<ul style="list-style-type: none"> <li>Call a poison control center or doctor immediately for treatment advice.</li> <li>Have person sip a glass of water if able to swallow.</li> <li>Do not induce vomiting unless told to do so by a poison control center or doctor.</li> <li>Do not give anything to an unconscious person.</li> </ul>

Have the product container or label with you when calling a poison control center or doctor or going for treatment. You may also contact 1-800-334-7577 for emergency medical treatment.

**Note To Physician:** No specific antidote is available. Treat the patient symptomatically.



**Bayer Environmental Science**  
A Business Group of Bayer CropScience LP  
2 T. W. Alexander Drive, Research Triangle Park, NC 27709  
www.BackedByBayer.com

PEEL OPEN

**BACKED  
by BAYER.**

NET CONTENTS  
14.8 fl. oz. (420 grams)

2903524  
3406386 040615A



**TEMPO<sup>®</sup> ULTRA WP**  
**Insecticide**

For Pest Management Professionals and commercial use only. For broad-spectrum control of crawling, flying, and wood infesting insect pests for indoor and outdoor surfaces, as well as insect pests of trees, landscape ornamentals and residential and commercial lawns.

<b>ACTIVE INGREDIENTS:</b>	
β-cyfluthrin, cyano(4-fluoro-3-phenoxyphe- nyl) methyl 3-(2,2-dichloroethyl)-2,2- dimethylsuccinate	100%
<b>OTHER INGREDIENTS:</b>	100%

EPA Reg. No. 432-1304 EPA Est. No. 53987-NJ-1  
**STOP** - Read the label before use.  
Keep out of reach of children.

**CAUTION**

**IN CASE OF MEDICAL, ENVIRONMENTAL OR TRANSPORTATION EMERGENCIES OR INJURIES, CALL 1-800-334-7577 (24 HOUR/DAY) For Product Information, Call Toll Free: 1-800-331-2867**

**STORAGE AND DISPOSAL**

**Do not** contaminate water, food, or feed by storage or disposal.

- Storage:**
- Store in a cool, dry place and in such a manner as to prevent cross contamination with other pesticides, fertilizers, food, or feed.
  - Protect from freezing.
  - Store in original containers and out of the reach of children, preferably in a locked storage area.
  - Handle and open container in a manner as to prevent spillage.

- Pesticide Disposal:**
- Pesticide wastes are hazardous.
  - Improper disposal of excess pesticide, spray mixture, or rinseate is a violation of Federal law.
  - If these wastes cannot be disposed of by use according to label instructions, contact your State Pesticide or Environmental Control Agency, or the Hazardous Waste representative at the nearest EPA Regional Office for guidance.

- Container Disposal:**
- Non-refillable container. Do not reuse or refill this container. Offer for recycling, if available.
  - Offer for reconditioning, if appropriate. Triple rinse container (or equivalent) promptly after emptying. Triple rinse as follows: Empty the remaining contents into application equipment or a mix tank. Fill the container 1/4 full with water and recap. Shake for 10 seconds. Pour rinsate into application equipment or a mix tank or store rinsate for later use or disposal. Drain for 10 seconds after the flow begins to drip. Repeat this procedure two more times.
  - Do not use container in connection with food, feed, or drinking water.
  - Dispose of container by offering for recycling or reconditioning. Or puncture and dispose of container in a sanitary landfill, or by incineration, or, if allowed by state and local authorities by burning. If burned, stay out of smoke.

- Spills:**
- If the container is leaking or material is spilled for any reason or cause, carefully sweep material into a pile. Refer to Precautionary Statements on label for hazards associated with the handling of this material.

- Do not walk through spilled material.
- Dispose of as directed for pesticides above.
- Keep unauthorized people away.
- You may contact the Bayer Emergency Response Team for decontamination procedures or any other assistance at 1-800-334-7577.

**PRECAUTIONARY STATEMENTS**

**HAZARDS TO HUMANS AND DOMESTIC ANIMALS**

**CAUTION:** Causes moderate eye irritation. Harmful if swallowed, inhaled or absorbed through the skin. Do not get in eyes, on skin, or on clothing. Avoid breathing dust or spray mist. Wash thoroughly with soap and warm water after handling. Remove contaminated clothing and wash before reuse.

Do not allow children or pets to enter treated areas until surfaces are dry.

**ENVIRONMENTAL HAZARDS**

This pesticide is toxic to fish. Remove from premises or lightly cover fish tanks and disconnect aerators when applying indoors where such containers are present. Do not apply directly to water, or to areas where surface water is present or to intertidal areas below the mean high water mark. Drift and runoff from treated areas may be hazardous to aquatic organisms in neighboring areas. Do not contaminate water when disposing of equipment washwaters. Apply this product only as specified on this label.

This pesticide is highly toxic to bees exposed to direct treatment or residues on crops or weeds. Do not apply TEMPO<sup>®</sup> ULTRA WP Insecticide or allow it to drift onto crops or weeds on which bees are actively foraging. Additional information may be obtained by consulting your Cooperative Extension Service.

Refer to attached booklet for complete Directions for Use.